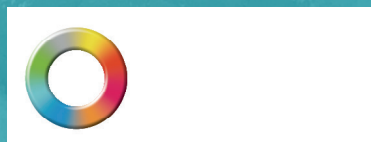

ARDEX BITUMINOUS ROOFING SYSTEMS



WORLD-RENOwnED
WATERPROOFING
SYSTEMS

LEADING INDUSTRY INNOVATION FOR OVER 50 YEARS

Established globally, ARDEX has pioneered and developed innovative waterproofing solutions for all forms of construction. With a proven track record, our commitment to uncompromising quality has resulted in products that stand up to not only the test of time, but the test of moisture too.



The major point of difference between an ARDEX warranty and other warranties is the extent of the cover provided for the owner or builder. Most competitor product warranties cover only the replacement of the defective product. That is further reduced through a discounting structure based on years of service prior to the claim. And usually, no cover is provided for the costs incurred in removing the defective product and installing the replacement product.

VERSATILITY COMES STANDARD

The advantage that comes with our system is that it can be applied to the same effect across a number of projects and lasts upwards of 15 years. When applying the base sheet, there is the option between both torch-applied and self-adhesive membranes which can be safer to apply in certain circumstances. And by opting for a double layer membrane the strength and durability of the product is evident.



BACKED BY A PROVEN SUPPLIER

The value of a manufacturer's product warranty or guarantee varies enormously, and its value cannot be judged by the period it is valid for, but by what it covers during the period. The System ARDEX Warranty is project specific and warrants the combination of products that forms the system are free from defects, are 100% compatible and the system combination is suitable for the purpose intended. The period warranted will be project specific. A System ARDEX Warranty may be issued if the following requirements are met:

- The project is registered with ARDEX from the early planning stages;
- The total area of ARDEX products used is greater than 200m²;
- ARDEX are involved in creating the products specification for the project;
- Installers and applicators of ARDEX products have been specifically approved by ARDEX as suitable to undertake this work; and ARDEX are able to complete site inspections before, during and after installation of ARDEX products.

To discuss if your project meets these requirements, please contact your local ARDEX representative.

An ARDEX warranty covers:

- The costs of repair to which the product is applied and damaged by removal of the defective product where such proves necessary
- The cost of reinstating or repairing the product or system including material costs of equal or equivalent products
- The costs of rectifying any material covering the product

ARDEX warranty claims are NOT discounted by years of service of defective products or any damage to the surface or material.

The System ARDEX Warranty is project specific and warrants that the System ARDEX combination of products that forms the total system are free from defects, are 100% compatible and the system combination is suitable for the purpose intended.

THE BITUMINOUS WATERPROOFING SYSTEM

The ARDEX Bituminous Roofing System incorporates substrate primers and bituminous sheet membranes for a variety of roofing installations. The range comprises both Atactic Polypropylene Plastomeric (APP) and Styrene Butadiene Styrene (SBS) torch-applied and self-adhesive membrane products.

Details for each product are contained in the individual Product Technical Data Sheets found on our website **www.ardex.co.nz**

1 - PRIMER

ARDEX WPM 240



ARDEX WPM 240 is a solvent-based primer to be used to seal and prepare the substrate prior to the installation of ARDEX torch-applied and self-adhesive membranes.

Technical Data

Coverage: 1L = 5m²
Packaging: 20L
Colour Clear and Black

ARDEX WPM 247



ARDEX WPM 247 is a water-based bitumen modified primer used to seal and prepare the substrate prior to the installation of ARDEX torch-applied and self-adhesive membranes.

Technical Data

Coverage: 1L = 6m²
Packaging: 4L and 20L
Colour Black liquid comprising bitumen suspended in water

2 - BASE SHEET



ARDEX WPM 114

ARDEX WPM 114 is an Atactic Polypropylene Plastomeric (APP) type modified bitumen membrane vented base sheet, consisting of a specially formulated bituminous compound of distilled asphalt modified with selected high-grade viscoelastic polymers. ARDEX WPM 114 is ideal where there may be potential moisture issues in the substrate.

Typical Uses:

- As the base sheet of multi-layer systems in roofing applications
- Designed for use where there may be potential moisture issues in the substrate

Technical Data

Type:	APP with SBS Strips
Reinforcement:	Polyester/Glass (180g/m ²)
Thickness:	4mm
Top surface:	Sanded polymer
Bottom surface:	Thermo-Adhesive strips
Substrates:	Concrete Screeds
Dimensions:	1m x 10m (W x L)



ARDEX WPM 117

ARDEX WPM 117 is a self-adhesive, fibre-reinforced Styrene Butadiene Styrene (SBS) bituminous membrane. ARDEX WPM 117 is cold-applied and installed without the use of naked flames, and self-seals on contact if being installed using nails or other fasteners, or if cut accidentally.

ARDEX WPM 117 resists elongation and mechanical stresses like no other system or waterproofing material can. ARDEX WPM 117 has assured versatility because of its softness, lightness and flexibility.

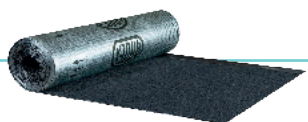
Typical Uses:

As a base layer over heat sensitive substrates or in confined spaces where the use of a naked flame must be avoided.

Technical Data

Type:	SBS
Reinforcement:	Fibreglass
Thickness:	2mm
Substrates:	Timber, zincalume, aluminium, concrete, ARDEX Polyiso Board
Dimensions:	1m x 15m (W x L)

3 – TOP SHEET



ARDEX WPM 189 AND WPM 189+

ARDEX WPM 189 is a dual-layer, modified bitumen membrane, consisting of a specially formulated bituminous compound. The bottom layer of ARDEX WPM 189 comprises of an SBS compound which gives high elasticity and excellent flexibility at low temperatures. The top layer is then formed from APP modified bitumen which provides good cold flexibility and high resistance to heat and UV radiation. ARDEX WPM 189 is coated with a mineral chip, and WPM 189+ is coated with a ceramic chip for increased colour stability.

Uses:

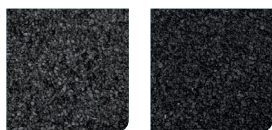
ARDEX WPM 189 is ideal for use as a multi-layer membrane in horizontal or vertical applications for waterproofing balconies, terraces and roofs. ARDEX WPM 189 is the final layer in the system.

- Mineral coated SBS/APP bitumen membrane
- Excellent resistance to atmospheric agents
- High puncture resistance
- Heat welded laps provide a homogenous join
- Excellent cold flexibility and elasticity
- Excellent resistance to cracking

Technical Data

Thickness:	WPM 189: 4mm WPM 189+: 5mm
Substrates:	Base sheets
Dimensions:	1m x 8m (W x L)

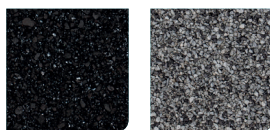
WPM 189 Colours:



Grey

Black

WPM 189+ Colours:



Black Gloss

Black / Grey

4 – SEALANT



ARDEX BITUMINOUS ROOF SEALANT

ARDEX Bituminous Roof Sealant is a one component, easy-to-use, UV-stable sealant with bitumen-based solvents. It is used for gluing and sealing on roofs. It is ideal for fast repairs of cracks, holes and fractures on roofs and between old bitumen membranes.

Technical Data

Packaging:	300ml Cartridge
Substrates:	Tin, Aluminium, Copper, Brass, Ceramic, Bitumen, Concrete, Plaster, Roof tiles, Plaster tiles
Colours:	Black





CASE STUDY

TE PUIA CULTURAL CENTRE WHAREKAI BUILDING

PROJECT DESCRIPTION

Building	Te Puia Wharekai
Area covered	1,200m ²
Applicator	Holmac
Architect	Allistar Cox

The latest tourist attraction in Rotorua is none other than Te Puia; a cultural centre educating visitors on New Zealand's geothermal wonders and unique Māori culture.

The vision for this cultural hub proved to be difficult requiring a sloping, multiple story building constructed over unstable, geothermal ground. Working closely with architects from Allistar Cox and installers from Holmac, ARDEX New Zealand managed to resolve all external waterproofing needs for the 1,200m² roof.

Due to a wet concrete substrate as a result from poor weather conditions, a special two-layer torch-applied system using ARDEX WPM 114 Vented Base Sheet and ARDEX WPM 189 Duo capping sheet was selected to roof the cultural centre. ARDEX WPM 114 has special venting properties that allow moisture to vent through channels in the membrane. The moisture will eventually make its way to an opening, such as a parapet or an ARDEX Low Rise Roof Vent, without the need for holes in the venting layer; making ARDEX WPM 114 a fantastic choice for coverage over substrates that may have moisture issues.

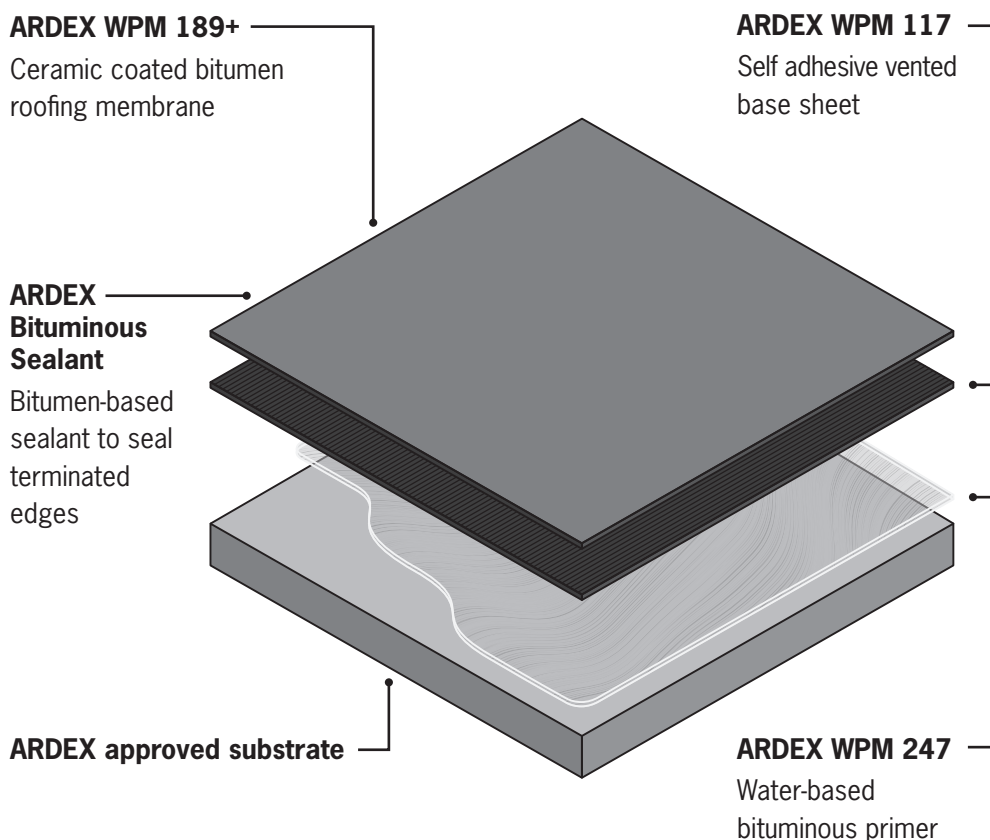
Completed in June 2018, Te Puia Cultural Centre is ready to let visitors in and keep the water out.

THE BITUMINOUS WATERPROOFING SYSTEM

A 2-LAYER SYSTEM

When it comes to ensuring that your building is completely waterproof, it makes sense to choose a product that is globally recognised and can stand up to the scrutiny of the masses.

To create a watertight seal regardless of the substrate in question, we've developed a system made up of a primer, base sheet, cap sheet and bituminous sealant that is suitable for exposed roofs and decks for residential and commercial projects.



To learn more please call 0800 227 339, email specification@ardexnz.com or visit www.ardex.co.nz

ARDEX Torch-Applied Membranes

System Recommendations

ARDEX Torch-applied waterproofing membranes can be used in a wide variety of combinations to suit the requirements of a specific waterproofing application. The following table outlines most of the acceptable alternatives for a range of common situations encountered. Please consult with your ARDEX representative to select the most appropriate solution.

The systems must be installed in accordance with each individual datasheet over substrates prepared as per substrate specification.

Concrete Substrates

Warranty Period

1	Single Layer Non-Exposed	10 Years
	1st Layer: ARDEX WPM 114 APP vented base sheet	
2	Two Layer Non-Exposed	20 Years
	1st Layer: ARDEX WPM 114 APP vented base sheet	
	2nd Layer: ARDEX WPM 180 3.5mm reinforced APP membrane	
3	Three Layer Non-Exposed	25 Years
	1st Layer: ARDEX WPM 114 APP vented base sheet	
	2nd Layer: ARDEX WPM 120 2.5mm reinforced APP membrane	
	3rd Layer: ARDEX WPM 180 3.5mm reinforced APP membrane	
4	Two Layer Exposed	20 Years
	1st Layer: ARDEX WPM 114 APP vented base sheet	
	2nd Layer: ARDEX WPM 189+ Ceramic coated bitumen membrane	
5	Three Layer Exposed	25 Years
	1st Layer: ARDEX WPM 114 APP vented base sheet	
	2nd Layer: ARDEX WPM 120 2.5mm reinforced APP membrane	
	3rd Layer: ARDEX WPM 189+ Ceramic coated bitumen membrane	

Heat-Sensitive Substrates (i.e. Plywood, Strandsarking, Insulation Board)

6	Two Layer Non-Exposed	20 Years
	1st Layer: ARDEX WPM 117 2nd Layer: ARDEX WPM 180	Self-adhesive bituminous base sheet 3.5mm reinforced APP membrane
7	Three Layer Non-Exposed	25 Years
	1st Layer: ARDEX WPM 117 2nd Layer: ARDEX WPM 120 3rd Layer: ARDEX WPM 180	Self-adhesive bituminous base sheet 2.5mm reinforced APP membrane 3.5mm reinforced APP membrane
8	Two Layer Exposed	20 Years
	1st Layer: ARDEX WPM 117 2nd Layer: ARDEX WPM 189+	Self-adhesive bituminous base sheet Ceramic coated bitumen membrane
9	Three Layer Exposed	25 Years
	1st Layer: ARDEX WPM 117 2nd Layer: ARDEX WPM 120 3rd Layer: ARDEX WPM 189+	Self-adhesive bituminous base sheet 2.5mm reinforced APP membrane Ceramic coated bitumen membrane

SPECIALTY
BUILDING
MATERIALS THAT
STAND THE TEST
OF TIME



0800 227 339
www.ardex.co.nz